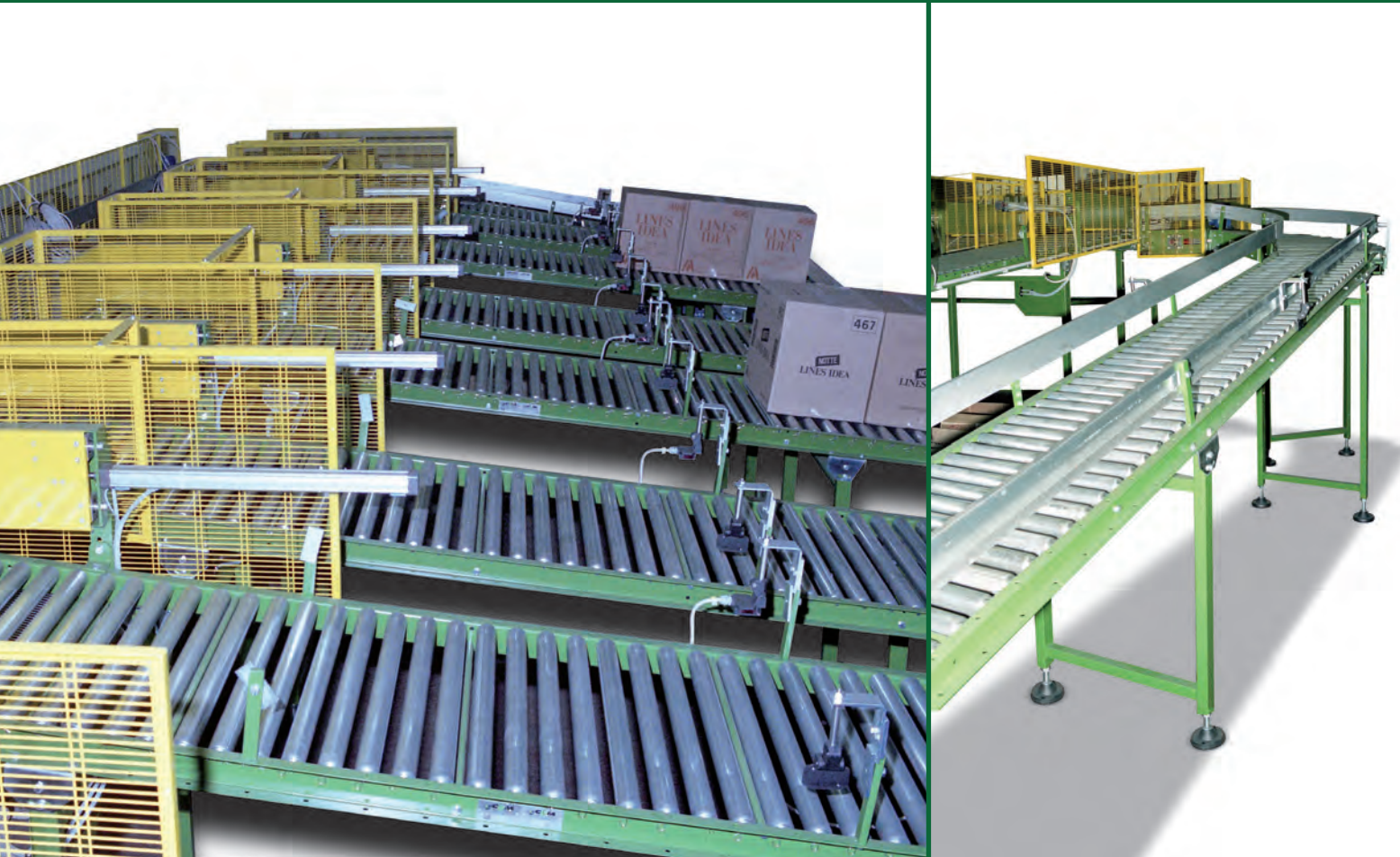




CONVEYOR LINES FOR CARTONS, BUNDLES, THERMORETRACTABLE MATERIALS



2.1 Idle roller conveyors, motor-driven conveyors, grouping conveyors



Idle roller conveyors can have roller's diameter and step different type depending the handling product type, from minimum $\text{Ø}30$ mm to maximum $\text{Ø}60$ mm.

They can be motorized by chain and belt, tangential or at ring disposition.

Idle roller conveyor can be unidirectional or bidirectional.

The machinery can be formed by painted steel, electro-zincify steel, stainless steel and aluminium.

TECHNICAL DATES

HANDLED PRODUCT TYPE:

Cartons, bundles, thermoretractable materials.

HANDLED PRODUCT SIZE:

Minimum 150mm x 100mm

Maximum 600mm x 800mm

MAXIMUM SPEED:

Up to 35 mt/min



Via Mattei, 3/5
42049 Calerno di Sant'Ilario D'Enza (RE)
Tel: +39 0522 474000 - Fax: +39 0522 474200
info@cpm-logit.it - www.cpm-logit.it

